

UNI T

UE580T-72H

570-590W

N-type TOPCon Monofacial Solar Module



N-type Technology

N-typemodules with Tunnel Oxide Passivating Contacts (TOPCon) technology offer lower LID/LeTID degradation and better low light performance.



HOT 2.0 Technology

N-type modules with UESolar's HOT 2.0technology offer better reliability andefficiency.



Durability Against Extreme Environment

High salt mist and ammonia resistance.



Mechanical Load Enhanced

Certified to withstand:
5400 Pa front side max static test load
2400 Pa rear side max static test load



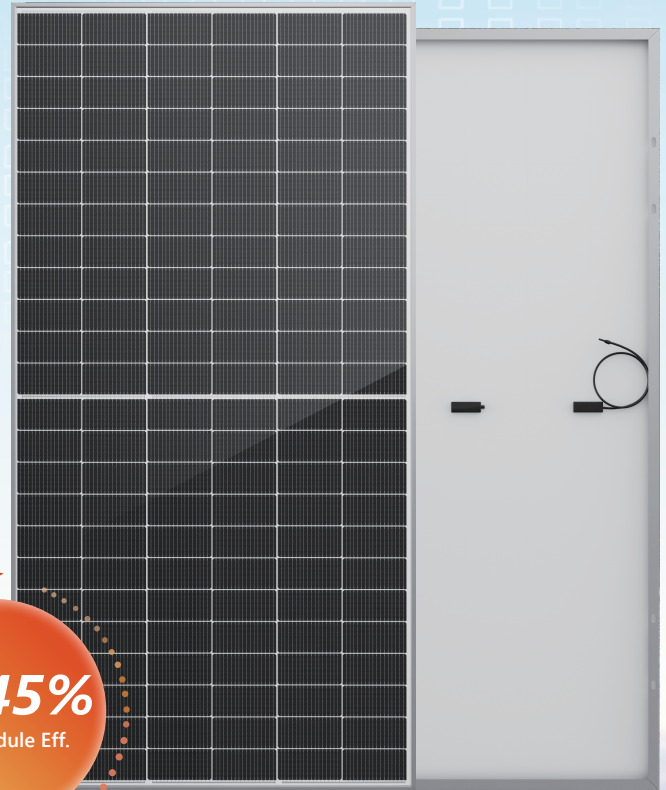
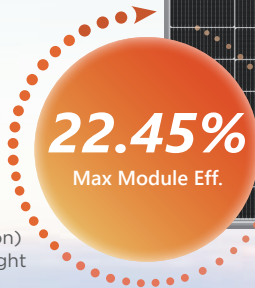
SMBB Technology

Better light trapping and current collectionto improve module power output andreliability.



Anti-PID Guarantee

Minimizes the chance of degradation caused byPID phenomena through optimization of cellproduction technology and material control.

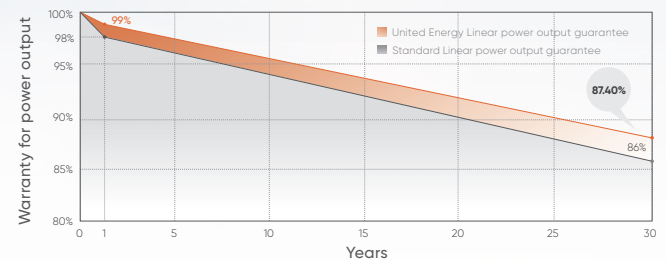


Quality Management System and Product Certification

- IEC 61215, IEC 61730, UL 61730
- ISO9001: 2015: ISO Quality Management System.
- ISO14001: 2015:ISO Environmental Management System.
- ISO45001: 2018: Occupation Health and Safety.
- IEC62941:Guideline for module design qualification and type approval.

Quality Guarantee

12 year Materials Warranty **30** year Power Warranty



Electrical Parameters(STC*)

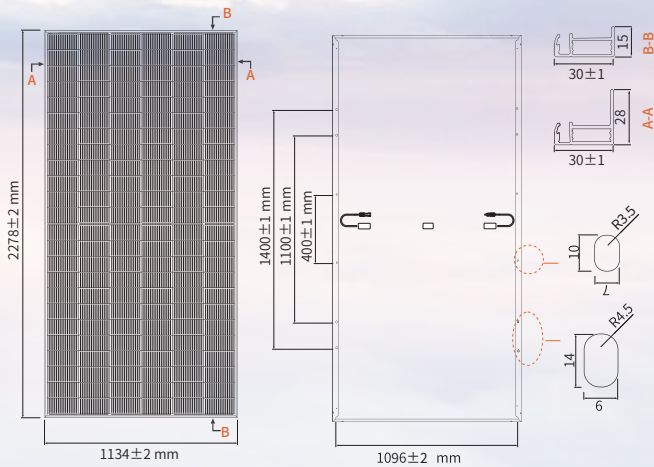
Module Type	570	575	580	585	590
Maximum power (Pmax/W)	570	575	580	585	590
Open Circuit Voltage (Voc/V)	51.99	51.15	51.31	52.31	52.63
Short Circuit Current (Isc/A)	13.89	13.95	14.01	14.01	14.13
Voltage at Maximum power (Vmpp/V)	42.99	43.17	43.35	43.53	43.71
Current at Maximum Power (Imp/A)	13.26	13.32	13.38	13.44	13.50
Module Efficiency(%)	22.07	22.26	22.45	22.65	22.84

Specifications(NOCT)

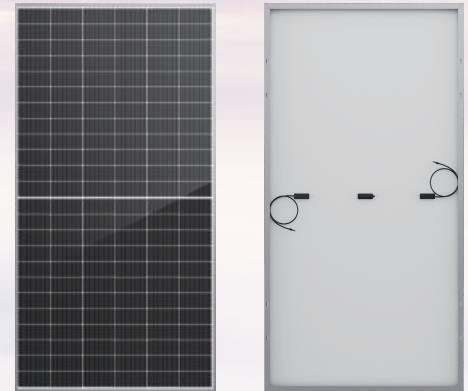
Maximum power (Pmax/W)	430	433	437	441	445
Maximum power Voltage (Vmp/V)	40.37	40.54	40.70	40.86	41.05
Maximum power Current (Imp/A)	10.64	10.69	10.74	10.79	10.83
Open Circuit Voltage (Voc/V)	49.38	49.54	49.69	49.84	49.99
Short Circuit Current (Isc/A)	11.21	11.26	11.31	11.36	11.41

- Standard Test Conditions [STC]: irradiance 1000W/m²; AM 1.5; ambient temperature 25°C according to EN 60904-3;
- Tolerance of Pm: 0~+5W, Measuring uncertainty of power: ±3%. Performance deviation of Voc [V], Isc [A], Vm [V] and Im [A]: ±3%.

Design(mm)



Product Image



Design(mm)

Solar Cells	N-type Mono
No. of Cells	144 (6×24)
Dimensions	2278 × 1134 × 30mm
Weight	27.0kg
Front Glass	3.2mm, Anti-Reflection Coating; High Transmission, Low Iron, Tempered Glass
Frame	Anodized aluminium alloy
Junction Box	Ip68 rated (3 Bypass Diodes)
Output Cables	4mm ² , 400mm (+) / 200mm (-), or customized Length
Connectors	Mc4 compatible
Mechanical load test	5400Pa
Packaging	36pcs/box, 720pcs/40'HQ

Operating Characteristics

Operating Module Temperature	-40°C - +85°C
Maximum System Voltage	1500V DC (IEC)
Maximum Series Fuse Rating	25A
Power Tolerance	0/+5W

Temperature Characteristics

Nominal Operating Temperature (NMOT)	45±2°C
Temperature Coefficient of Pmax	-0.29%/°C
Temperature Coefficient of Voc	-0.25%/°C
Temperature Coefficient of Isc	+0.045%/°C